

FARM NAME \_\_\_\_\_

Doc.No. **2.53**

Title: **Policy in the Event of a True Recall\***

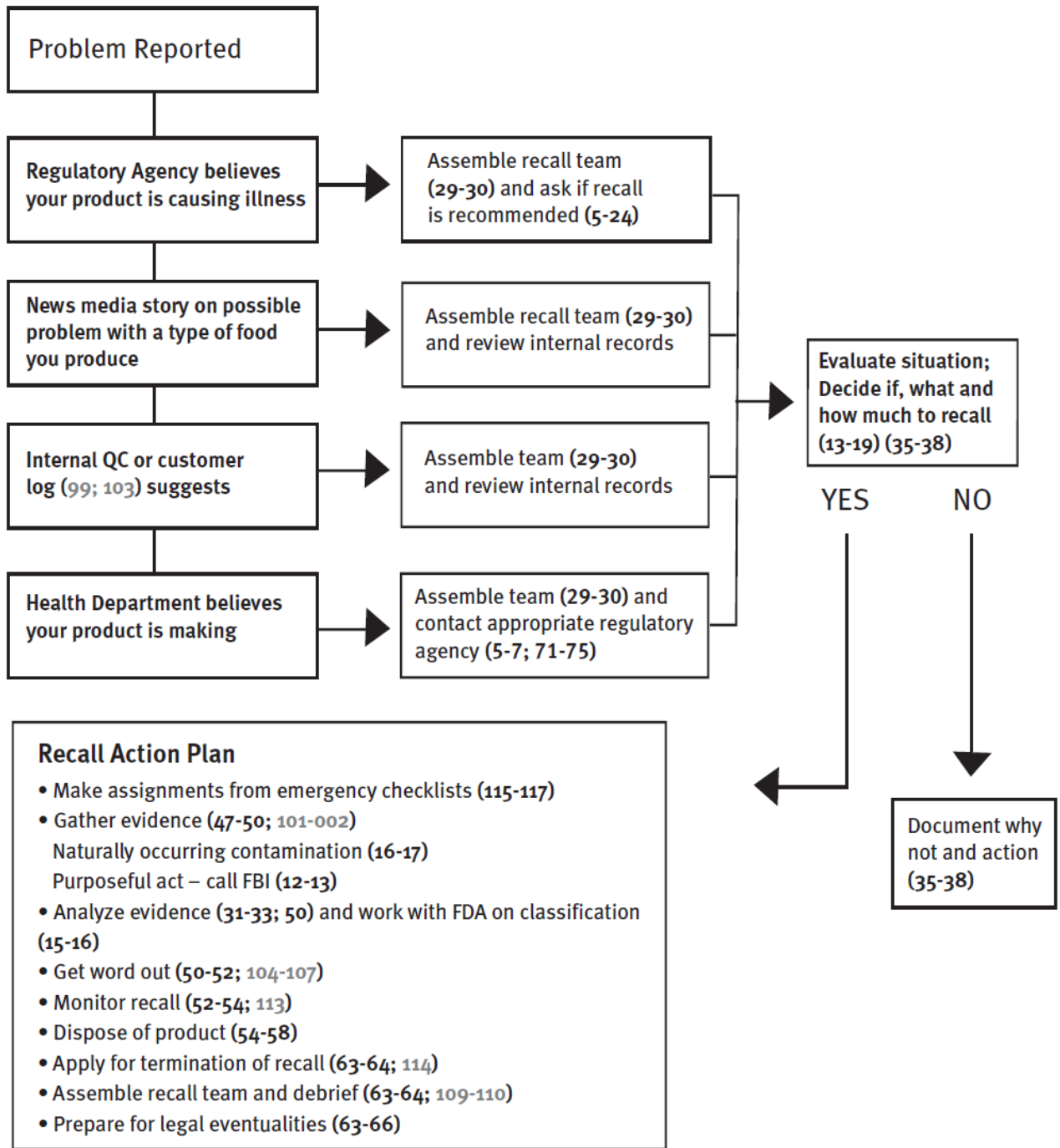
Effective Date: \_\_\_\_\_

Reviewed by: \_\_\_\_\_ GAP Coordinator, Date: \_\_\_\_\_

1. This farm has a Recall Team designated in the case of a food safety recall event. (See **Doc. 3.23**)
2. Any and all problems reported will be subjected and evaluated using the Recall Action Flow Diagram (See below).
3. Any consumer complaint or threat is recorded on **Doc. 3.31** adhering exactly to the questions on the form.
4. In the case of a Recall Event, the Plan of Action will be followed.
5. The Plan of Action consists of:
  - a. Make assignments from emergency checklist (**Doc. 4.37**)
  - b. Gather evidence
    - i. Naturally occurring contamination
    - ii. Purposeful act- **Call FBI**
  - c. Analyze evidence and work with FDA on classification
  - d. Get word out
  - e. Monitor recall
  - f. Dispose of product
  - g. Apply for termination of recall
  - h. Assemble recall team and debrief
  - i. Prepare for legal eventualities

Standard Operating Procedure

6. The Recall Action Flow Diagram is as follows:



\*The Food Recall Manual, University of Florida